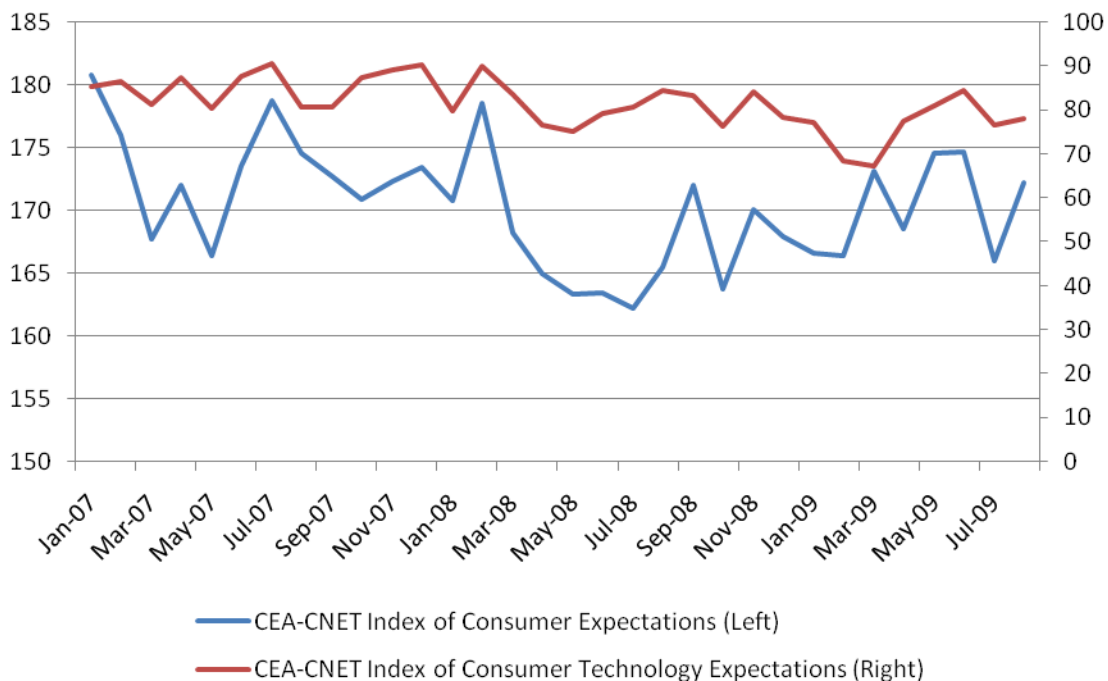


The CEA-CNET Consumer Sentiment Indexes

The CEA-CNET Consumer Sentiment Indexes represent more than three years of research into cutting-edge methods for measuring consumer expectations about the future. The indexes measure how consumers perceive the overall health of the economy and the outlook for technology spending. Both indexes focus on consumer perceptions of the future. These forward looking expectations provide market observers valuable information into how consumers will likely behave over the pursuing months.

Consumer Sentiment edged up in August as measured by the CEA-CNET Consumer Sentiment Indexes. Overall sentiment as measured by the CEA-CNET Index of Consumer Expectations increased 3.8 percent from last month and is now 4 percent higher than last August. Across the board, consumers are feeling better about the US economy as well as their own job and financial health. Consumers also appear to be more optimistic about their spending intentions on consumer electronics as measured by the CEA-CNET Index of Consumer Technology Expectations.

The CEA-CNET Consumer Sentiment Indexes



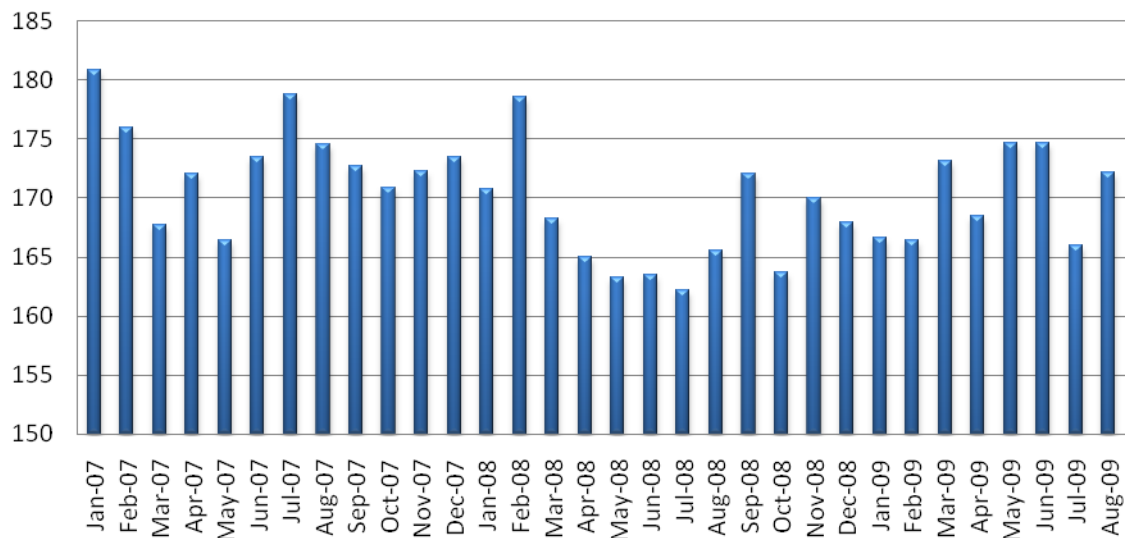
The CEA-CNET Index of Consumer Expectations

The CEA-CNET Index of Consumer Expectations (ICE) measures consumer expectations about the broader economy. The index carries a maximum value of 300 and a minimum value of 100.

Table 1: CEA-CNET Index of Consumer Expectations

2007											
Jan	Feb	Mar	Apr	May	Jun	Jul	Aug	Sept	Oct	Nov	Dec
180.8	176.0	167.7	172.0	166.4	173.5	178.7	174.6	172.7	170.9	172.3	173.4
2008											
170.8	178.6	168.2	165.0	163.3	163.4	162.2	165.5	172.0	163.7	170.0	167.9
2009											
166.6	166.4	173.1	168.5	174.6	174.7	165.9	172.2				

CEA-CNET Index of Consumer Expectations



- In August, the CEA-CNET Index of Consumer Expectations increased nearly 4 percent.
- All three components of the broad index increased in August. Consumers are more optimistic about the future outlook for the economy, believe they will be financially better off in the year to come, and have more optimistic expectations for their employment.

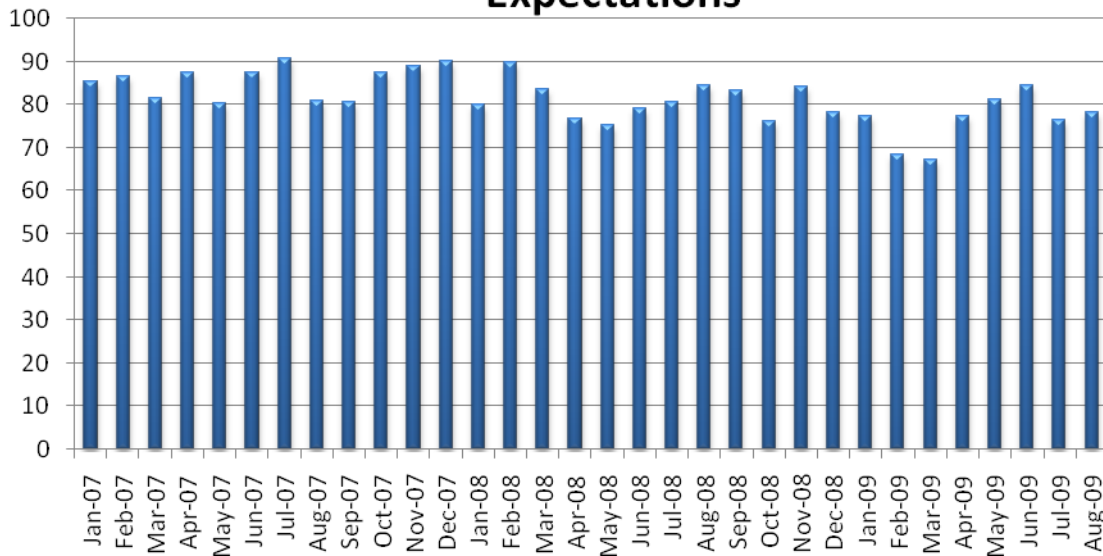
The CEA-CNET Index of Consumer Technology Expectations

The CEA-CNET Index of Consumer Technology Expectations (ICE) measures consumer expectations about technology spending. The index carries a maximum value of 200 and a minimum value of zero.

Table 2: CEA-CNET Index of Consumer Technology Expectations (ICTE)

2007											
Jan	Feb	Mar	Apr	May	Jun	Jul	Aug	Sept	Oct	Nov	Dec
85.4	86.5	81.4	87.4	80.4	87.6	90.7	80.8	80.6	87.4	89.1	90.2
2008											
79.0	89.9	83.5	76.7	75.2	79.2	80.7	84.4	83.2	76.2	84.2	78.3
2009											
77.3	68.4	67.2	77.4	81.1	84.4	76.6	78.2				

CEA-CNET Index of Consumer Technology Expectations



- In August, the CEA-CNET Index of Consumer Technology Expectations (ICTE) increased, but remains below its level from a year ago.
- In August we saw a marginal improvement in the likelihood of buying technology in the months to come and a more noticeable increase in the likelihood of spending a higher dollar amount on technology than in previous months.

About the CEA-CNET Consumer Sentiment Indexes

The CEA-CNET Consumer Sentiment Indexes are a joint effort of CEA and CNET. The Indexes are published monthly on the fourth Tuesday of each month. The survey data are collected each month by random-digit-dial for 1,000 respondents and weighted to be representative of the U.S. population.

For an in-depth analysis of the methodology used in the CEA-CNET Consumer Sentiment Index see the whitepaper “The CEA-CNET Consumer Sentiment Indexes.”

About CEA

The Consumer Electronics Association (CEA) is the preeminent trade association promoting growth in the \$173 billion U.S. consumer electronics industry. More than 2,200 companies enjoy the benefits of CEA membership, including legislative advocacy, market research, technical training and education, industry promotion and the fostering of business and strategic relationships. CEA also sponsors and manages the International CES – Where Entertainment, Technology and Business Converge.

About CNET

CNET (www.cnet.com), a property of CBS Interactive, is where people go to discover the latest in tech and consumer electronics. Driven by a trusted voice and a passionate community, CNET creates an open environment for people to find and use the best products to fit their lifestyle. The powerful combination of CNET's award-winning news, lab-tested product reviews, safe and spyware-free downloads, and user-generated content give people information and inspiration to live and thrive in a life gone digital.

Appendix I: Composition of the CEA-CNET Index of Consumer Expectations

The CEA-CNET Index of Consumer Expectations is derived from three components – Expectations for the U.S. Economy, Expectations for the Job Market, and Expectations for Personal Financial Health. The CEA-CNET Index of Consumer Technology Expectations is derived from two components – Expectations for Purchasing CE and Expectations for Purchasing More CE.

Table 3: Expectations for the U.S. Economy

2007											
Jan	Feb	Mar	Apr	May	Jun	Jul	Aug	Sept	Oct	Nov	Dec
39.9	37.4	36.9	35.6	32.5	38.1	39.7	39.8	35.3	35.4	34.9	36.4
2008											
38.2	40.6	39.5	36.5	33.6	33.6	34.9	35.1	38.5	39.7	41.3	42.0
2009											
41.2	38.7	44.1	43.7	46.8	47.8	42.7	43.7				

Table 4: Expectations for the Job Market

2007											
Jan	Feb	Mar	Apr	May	Jun	Jul	Aug	Sept	Oct	Nov	Dec
83.5	85.2	80.0	84.5	82.9	82.5	84.1	84.5	85.8	83.6	84.8	83.3
2008											
83.5	83.4	81.1	82.5	81.7	81.6	80.7	82.3	81.8	78.8	81.9	79.6
2009											
80.5	82.6	78.8	78.5	78.2	77	77.5	81.4				

Table 5: Expectations for Personal Financial Health

2007											
Jan	Feb	Mar	Apr	May	Jun	Jul	Aug	Sept	Oct	Nov	Dec
57.3	53.4	50.8	52.0	51.1	53.0	54.9	50.3	51.5	51.9	52.6	53.7
2008											
49.1	54.6	47.7	46.0	48.1	48.3	46.6	48.1	51.7	45.2	46.8	46.3
2009											
44.9	45.1	50.2	46.4	49.6	49.8	45.7	47.1				

Table 6: Expectations for Buying CE

2007											
Jan	Feb	Mar	Apr	May	Jun	Jul	Aug	Sept	Oct	Nov	Dec
48.8	50.3	47.1	50.9	46.4	50.0	52.4	46.5	46.7	51.3	51.7	50.5
2008											
46.3	52.5	47.4	44.4	43.9	46.6	47.8	49.7	49.7	45.3	50.3	47.4
2009											
45.7	41.0	40.6	45.1	46.5	49.6	45.4	45.6				

Table 7: Expectations for Spending More on CE

2007											
Jan	Feb	Mar	Apr	May	Jun	Jul	Aug	Sept	Oct	Nov	Dec
36.6	36.1	34.3	36.5	34.0	37.6	38.2	34.3	33.9	36.1	37.4	39.7
2008											
33.7	37.4	36.1	32.3	31.3	32.5	33.0	34.7	33.6	30.9	33.8	30.8
2009											
31.6	27.5	26.6	32.3	34.5	34.8	31.2	32.6				